

Four-Tier Locker

Overall Dimensions in mm			Nesting Availability		
Height	Width	Depth	Initial	Nest 2	Nest 3
1800	225*	450	●	●	●
1800	225*	500	●	●	●
1800	300	300	●	●	●
1800	300	450	●	●	●
1800	300	500	●	●	●
1800	300	550	●	●	●
1800	300	600	●	●	-
1800	400	450	●	●	-
1800	400	500	●	●	-
1800	400	550	●	●	-
1800	400	600	●	●	-
1800	450	450	●	●	-
1800	450	500	●	●	-
1800	450	550	●	●	-
1800	450	600	●	●	-

* Slimline Lockers, also available in nests of 4

§ Shaded items available on special reduced lead-time delivery (in standard colours). Check current price lists for availability.

Product identification (front vent style):



Metric Series

Internal fittings:

- three fixed intermediate shelves

Standard lock fitting:

key operated deadlocks providing single-point locking. Supplied with two keys.

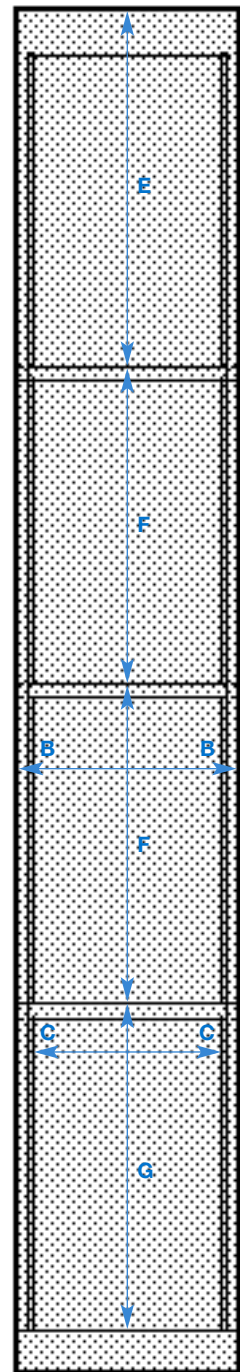
Door/compartment identification:

none supplied as standard.

Number plates are available separately - refer to page F1 for details.

Example weights in kg:

	Nest 1	Nest 2	Nest 3
300 x 450	18.3	33.4	48.5
400 x 450	22.4	41.5	-



A = overall width

BB = internal width (overall width -3mm)

CC = clear opening

225mm (overall width) = 175mm clear

300mm (overall width) = 250mm clear

400mm (overall width) = 350mm clear

450mm (overall width) = 400mm clear

D = overall depth

(internal depth is overall depth -21mm)

E = top compartment height: 468mm

F = intermediate compartment heights:
417mm